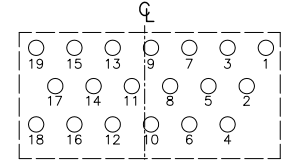
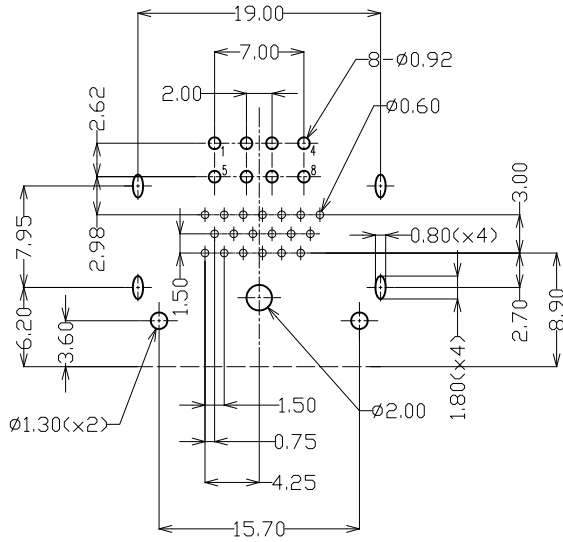
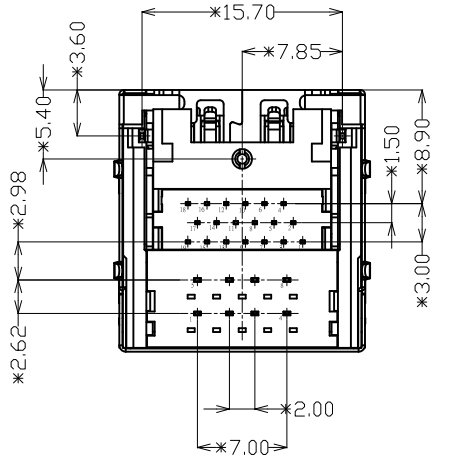
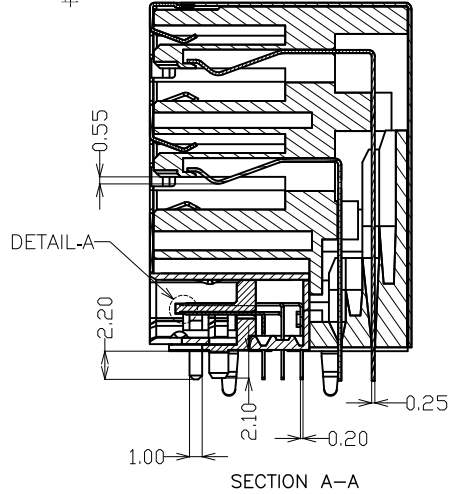
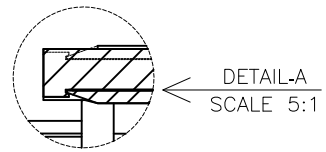
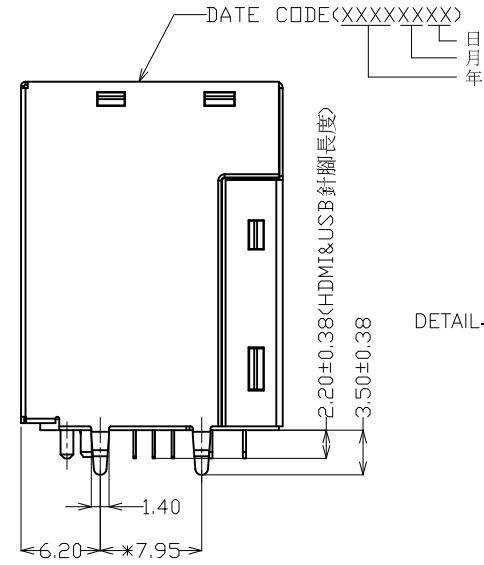
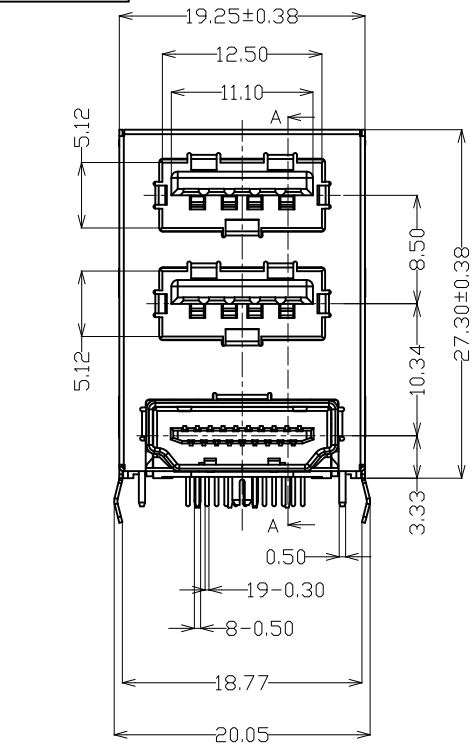


RoHS

| | | | |
|------|--------------|------|------------|
| REV. | MODIFICATION | APP. | DATE |
| A | NEW | Ray | 2014.11.12 |



1. MATERIALS:
- 1.1 USB HOUSING: PBT,UL94V-0,COLOR: BLACK.
 - 1.2 HDMI HOUSING: LCP,UL94V-0,COLOR: BLACK.
 - 1.4 CONTACT: COPPER ALLOY
 - 1.5 USB SHELL: STAINLESS STEEL
 - 1.6 HDMI SHELL: COPPER ALLOY
2. PLATING:
- 2.1 USB CONTACT: Au PLATED ON CONTACT AREA
TIN PLATED ON SOLDER TAIL AREA
NICKEL UNDERPLATING OVERALL.
 - 2.2 HDMI CONTACT: Au PLATED ON CONTACT AREA
TIN PLATED ON SOLDER TAIL AREA
NICKEL UNDERPLATING OVERALL.
 - 2.3 HDMI SHELL: NICKEL PLATED
3. ** 標示是重估管控尺寸

- SPECIFICATIONS
1. USB
- 1.1 Operation Voltage: 250 VAC(RMS) Max.
 - 1.2 Current Rating: 1.5 Ampere per Pontact
 - 1.3 Contact Resistance: 30 Milliohms Max.
 - 1.4 Insulation Resistance: 1000 Megohms Min.
 - 1.5 Dielectric Withstanding Voltage: 750 VAC(RMS)
 - 1.6 Total Mating Force: 3.57 Kgf Max.
 - 1.7 Total Unmating Force: 1.02 Kgf Min.
 - 1.8 Operating Temperature: -55°C to +85°C
2. HDMI
- 2.1 Operation Voltage: 40 VAC(RMS) Max.
 - 2.2 Current Rating: 0.5 Ampere per Contact
 - 2.3 Contact Resistance: 30 Milliohms Max.
 - 2.4 Insulation Resistance: 100 Megohms Min.
 - 2.5 Dielectric Withstanding Voltage: 500 VAC(RMS)
 - 2.6 Total Mating Force: 4.5 Kgf Max.
 - 2.7 Total Unmating Force: 1.0 Kgf Min.
 - 2.8 Operating Temperature: -55°C to +85°C

| | | | |
|-------------------|-------------|--------------|-----------------|
| MWAUS-A02P-HDMI23 | 15u" Au | 15u" Au | SUS430鍍鎳 (先鍍後沖) |
| MWAUS-A02P-HDMI33 | 1u" Au | 1u" Au | SUS430鍍鎳 (先鍍後沖) |
| PARY NO. | USB CONTACT | HDMI CONTACT | 鐵殼材質及電鍍規格 |

MOST WELL 麒祥科技股份有限公司
Most Well Technology Corp.

Title: Dual USB 2.0 Female 4Pin + HDMI A Type Female 19Pin DIP90° With Post & Shell foot Kink

| | | | | | |
|-------------------|------------------|--------------|------------|--------------|-----------------|
| <i>Tolerances</i> | | <i>App.</i> | <i>Ivy</i> | <i>Units</i> | <i>Part no:</i> |
| <i>Linear</i> | <i>Angles</i> | | | | |
| .x ±0.30 | x.° ±5° | <i>Dr.</i> | <i>Ray</i> | <i>Size</i> | <i>Dwg no.</i> |
| .xx ±0.20 | .x° ±2° | | | | |
| .xxx ±0.10 | .xx° ±1° | <i>Scale</i> | 1:1 | <i>Sheet</i> | 1/1 |
| <i>Projection</i> | <i>Revision.</i> | | | | |
| | A | | | | |