

RoHS

REV.	MODIFICATION	DRAW	DATE
A	NEW	Ray	2016.07.29

MATERIALS:

1. Housing: Glass Filled PA46 黑色 UL94V-0 (ROHS)
2. Insert: Glass Filled PBT 黑色 UL94V-0 (ROHS)
3. Shielding: Copper Alloy with Nickel Plated. (ROHS)
4. Contact: 0.35x0.44mm Phosphor Bronze gold Plating Over Nickel. (ROHS)

*MATES WITH MODULAR PLUG CONFORMING TO FCC PART 68, SUBPART F.

*The Mark "▲" Dimensions emphases.

ORDER INFORMATION PART NUMBER:

RJ41341- 02 X XX 1

Serial Number

S:Gold/Tin

M:Gold/Matte Tin

Plated:

05: Au 1 μ Sn 80~120 μ

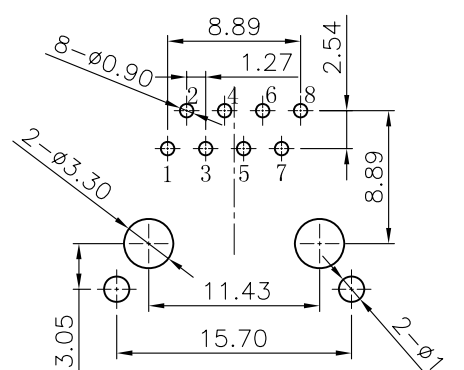
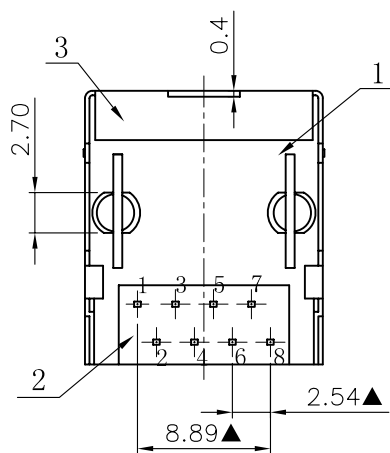
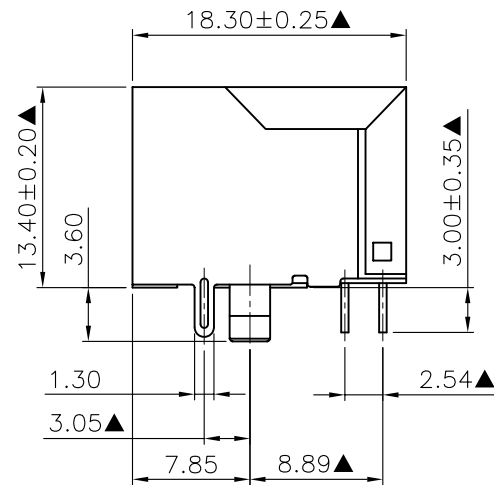
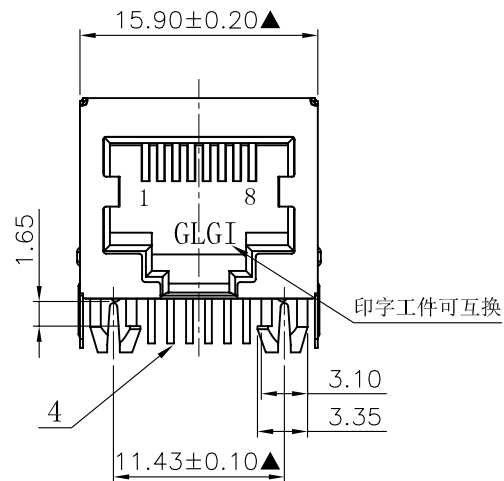
11: Au 3 μ Sn 80~120 μ

15: Au 6 μ Sn 80~120 μ

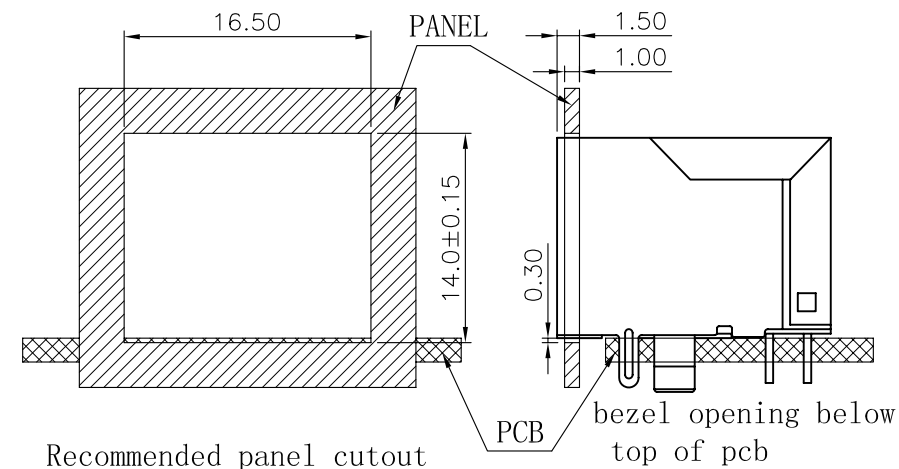
19: Au 15 μ Sn 80~120 μ

23: Au 30 μ Sn 80~120 μ


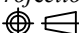
31: Au 30 μ Sn 150 μ min



RECOMMENDED P.C.B LAYOUT TOP VIEW
(COMPONENT SIDE TOLERANCE ±0.05)



Recommended panel cutout

 麒祥科技股份有限公司 Most Well Technology Corp.		Title: RJ45 Single Port 8P8C DIP 90° Copper Shell With DIP Shell Foot & Post									
Tolerances <table border="1"> <tr> <th>Linear</th> <th>Angles</th> </tr> <tr> <td>.x ±0.</td> <td>x.° ±5°</td> </tr> <tr> <td>.xx ±0.</td> <td>.x° ±2°</td> </tr> <tr> <td>.xxx ±0.</td> <td>.xx° ±1°</td> </tr> </table>		Linear	Angles	.x ±0.	x.° ±5°	.xx ±0.	.x° ±2°	.xxx ±0.	.xx° ±1°	App. Ivy Chk. Naomi Dr. Ray Date. 2016.07.29	Units <input checked="" type="checkbox"/> mm <input type="checkbox"/> inch Size A4 Scale Do Not Scale
Linear	Angles										
.x ±0.	x.° ±5°										
.xx ±0.	.x° ±2°										
.xxx ±0.	.xx° ±1°										
Projection 		Revision A	Part no: RJ41341-02XXX1 Dwg no. (MW00112) RJ41341-02XXX1 Sheet 1/1								